

## Coronavirus Update

Coronavirus in India updates : India Lockdown3.0 starts

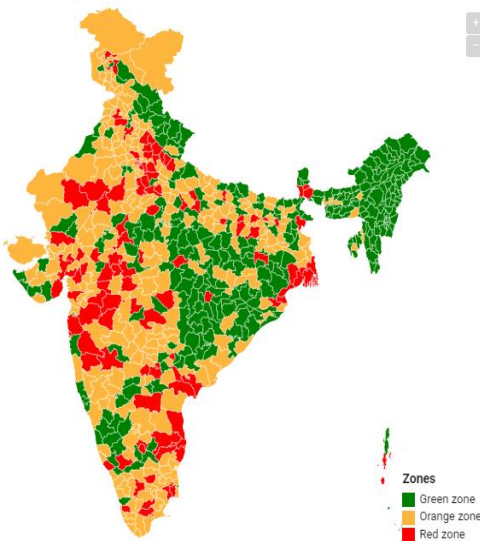
COVID-19 CASES			
	INDIA		WORLD
<b>Confirmed Cases</b>	Total Deaths	Total Recovered	Active Cases
<b>42,533</b>	<b>1,373</b>	<b>11,707</b>	<b>29,453</b>

In view of the recent developments concerning COVID-19, Ministry of Home Affairs - Government of India, has issued an order extending the lock down till 17th May 2020 (Sunday). This extension, however will see considerable relaxations which will be regulated based on the spread of virus in the districts, **identified as red, orange and green zones. However, containment areas within the red zone will see a total lock down.**

## India split into red, green and orange coronavirus zones

The health ministry (MHA) has listed 130 districts in the country in red zone, 284 in orange zone and 319 in green zone on the basis of incidence of cases of Covid-19, doubling rate, extent of testing and surveillance feedback. This classification of districts is to be followed by states and UTs for containment operations.

Three zones as defined by the MoHFW



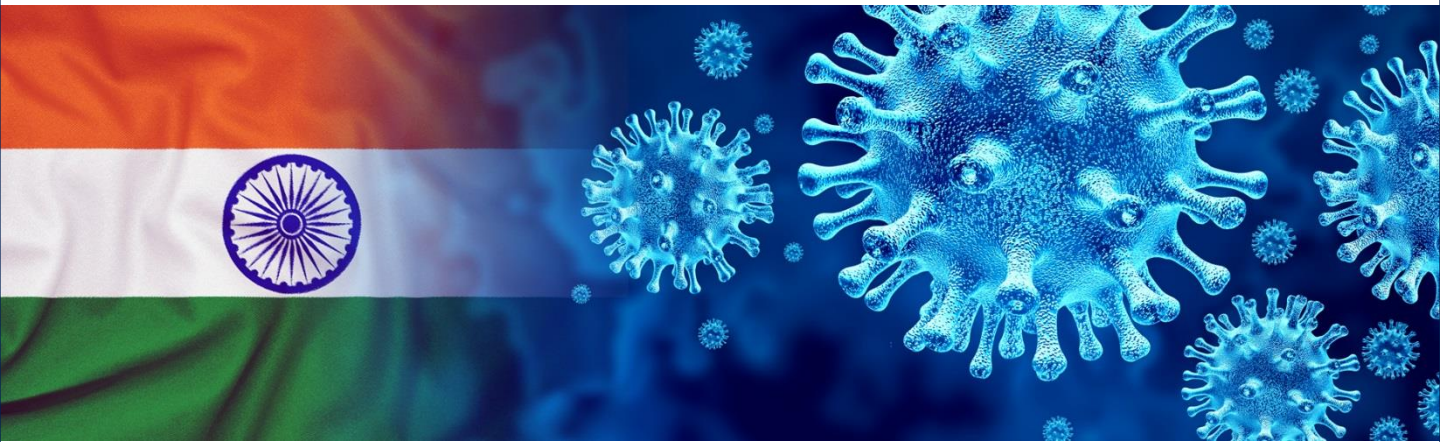
**Coronavirus Lockdown 3.0 - MoHFW guidelines:** Red Zone (hotspot), Orange Zone and Green Zone districts.

**Red Zone:** The centre has named hotspot districts as red zone as it needs to have focused attention in these area reporting a large number of Covid-19 cases.

**Orange Zone:** The areas with a limited number of cases in the past and with no surge in positive case would be under the orange zone

**Green Zone:** The health ministry stated that a district that has not reported positive coronavirus can be marked under this zone.

Exemption given to limited people linked to essential services business may be extension. Opening of liquor shops and other essential items which will generating revenue for state.



## Ports, Customs, CFS and Trucking

- As per Ministry of Shipping, all ports are operational, however given the quarantine requirements for vessels and congestions due to non-evacuation of import cargo at ports, delays are expected.
- As per Ministry of Finance, all customs related activities are fully operational.
- Government / Private CFS in all locations are open, however expect delays due to non-evacuation of import cargo at CFS resulting in space shortage to devan import containers. There are no delays to export carting's and stuffing at CFS.
- Transportation of cargo by road has been getting better day by day, and given the considerable relaxations now, expect to return to normalcy very shortly. Public transportation, is still restricted. International and domestic passenger flights remain suspended, however international freighters are operating from major airports with reduced frequency.

**We are actively monitoring events around the country, and will continue to review and implement procedures and action plans to protect our people and maintain stable operations. We will continue to keep you informed of any changes.**

## Lockdown impact: Slow delivery leading to stockpile of Nepalese cargo Exporters to Bangladesh taking sea route from Kolkata

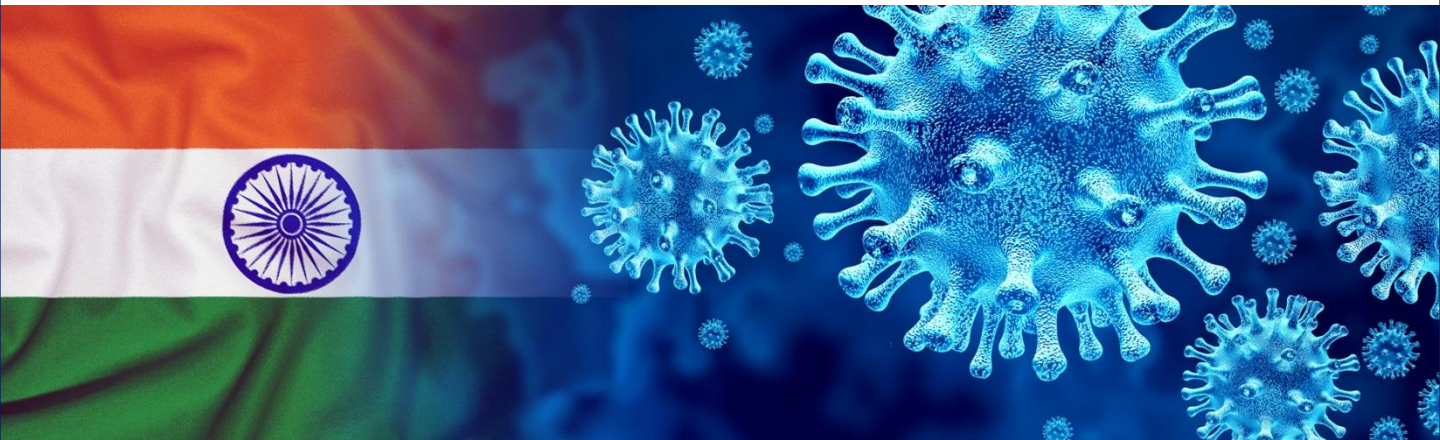
The Container Corporation (CONCOR)-run dry port at Birgunj in Nepal nowadays spends more time arranging boxes. As against a storage capacity of 1,500 containers of 20 ft each, the port has built a stockpile of 4,000 boxes, as importers in Nepal are barely taking deliveries.

The dry port is the delivery point of third-country imports in Nepal though the Kolkata and Vizag ports. As the Birgunj container depot ran out of capacity, Kolkata and Vizag together developed a stockpile of nearly 6,000 boxes, which will take over 60 railway rakes to be cleared.

The Railways is losing too. According to CONCOR sources, at least seven rakes returned empty from Birgunj. Nepal barely has any exportable cargo. Normally rakes collect empty containers on return.







## Special window

The stockpile is not costing users at this juncture, as shipping lines and ports relaxed penal provisions for delay in returning empties or lifting cargo during the lockdown period. The benefits are accrued by Indian importers as well. However, ports have taken a more considerate view on Nepal.

“We have a stockpile of nearly 3,000 Nepal-bound boxes. While the ground rents are waived for all users during the lockdown period, for Nepal we may offer the window for 15-odd more days after lockdown is lifted,” said Vinit Kumar, chairman of Kolkata Port Trust.

Interestingly, the lockdown failed to impact KoPT operations significantly. Kumar said the Haldia dock system is operating at 80-90 per cent capacity, while the Kolkata dock system - that mainly deals with containerised cargo - is operating at 80 %.



## Sea route to Bangladesh

While the cargoes arriving at the port were mostly booked before the lockdown, there are early indications of export push for select segments in the days to come.

According to Sailesh Chakraborty, a logistics consultant in Kolkata, with the demand potential in domestic market remaining low, sectors like iron ore and steel are aggressively looking at export opportunities. KoPT chairman has also confirmed this view.

Private iron ore miners are taking a lead in tapping export opportunities, mostly to China. Steel makers are reportedly looking at wider market opportunities, including in the neighbourhood. The initiative has brought about at least one positive change in neighbourhood trade logistics. Since land border movement between India and Bangladesh is disrupted by the pandemic, steel exporters are taking the sea route from Kolkata to Bangladesh.

Though theoretically, sea freight is always cheaper, rampant overloading makes road freight competitive in the eastern region. The balance may tilt away from land movement in the post Covid period, due to variety of reasons.





We would like to assure you that we are doing our utmost to keep operations running as smooth as possible.

Keeping all our colleagues world informed we have assigned 2-3 key person from each station to respond quickly in this time of uncertainty. We have we are **working from home** already and ensure that will take all the query from the world wide and support our collogues in best possible way.

All employees are **working from home we are having our remote system continuity plans in place** here below is the key persons details from each station to address the e-mails and the same can be addressed in this emergency. We monitor the situation closely and will provide further updates as they came to hand. Should you need any further information Please do not hesitate to contact a. hartrodt India representatives.

Locations (All India)	Key Representative	E-mail address	Contact details
Gurugram (HQ)	Mr. Arvind Saroha	arvind.saroha@hartrodt.com	+91 9999136130
Gurugram (HQ)	Mr. Mohit Khemka	mohit.khemka@hartrodt.com	+91 9999531263
Gurugram (HQ)	Ms Vineeta Solanki	vineeta.solanki@hartrodt.com	+91 9910923237
Gurugram (HQ)	Mr. Amit Verma	amit.verma@hartrodt.com	+91 8800577237
Mumbai	Mr. Satish Mohite	satish.mohite@hartrodt.com	+91 9004182828
Mumbai	Mr. Balkrishnan Waradkar	balkrishna.waradka@hartrodt.com	+91 9833106122
Mumbai	Mr. Santosh Bhardwaj	santosh.bhardwaj@hartrodt.com	+91 9619350052
Chennai	Mr. K. S. Raaman	sethu.raaman@hartrodt.com	+91 9841172941
Chennai	Mr. R. Sankar Narayanan	sankar.narayanan@hartrodt.com	+91 9952957766
Chennai	Mr. S. Senthil Kumaran	senthil.kumaran@hartrodt.com	+91 8754422047
Bangalore	Mr. Gopi Krishnan	gopi.krishnan@hartrodt.com	+91 9901009665
Bangalore	Mr. Yasodaran Muthusami	yasodaran.muthusami@hartrodt.com	+91 8884857222
Kolkata	Mr. Kunal Sengupta	kunal.sengupta@hartrodt.com	+91 9007699866
Kolkata	Ms. Sathi Debnath	sathi.debnath@hartrodt.com	+91 9874277788
Ludhiana	Mr. Rajan Puri	rajan.puri@hartrodt.com	+91 9592267666

We sincerely appreciate the support and assure you that we are absolutely committed to help & support to our collogues ensure that will take all the query from the world wide and support in best possible way.

**a. hartrodt India Pvt Ltd**  
Managing Director Mr. Ajay Kumar Bhatt  
ajay.bhatt@hartrodt.com | Phone +91 9811400395